

Girl Scout Brownies



Welcome to Discovery Center Museum!
Let's get started on our journey together.

Head to the AgZibit on the first floor:

Let's Make a Corn Husk Doll

Wherever corn was grown as a crop,
girls in both Native American and pioneer families
used husks to fashion dolls.

Follow the instructions at the doll making kiosk to
create a doll and then get creative to make her
uniquely your own!



Start a story!

What is her name? _____

How old is she? _____

Where is she from? _____



Page 16- Draw your dream park!

Head to the outdoor science park, secret garden, or river walk for inspiration!

Page 35- Get counting! How
many girls and women do you
see in the museum today?





Janice Voss

This Rockford astronaut was a Girl Scout, too!

When she was 9 years old, Janice Voss read her favorite book for the first time.

Can you find what book it was?



Hear a Story!

Page 39 Explore more of the story of Janice Voss. Design a mission patch to remember the story and your visit to the museum!

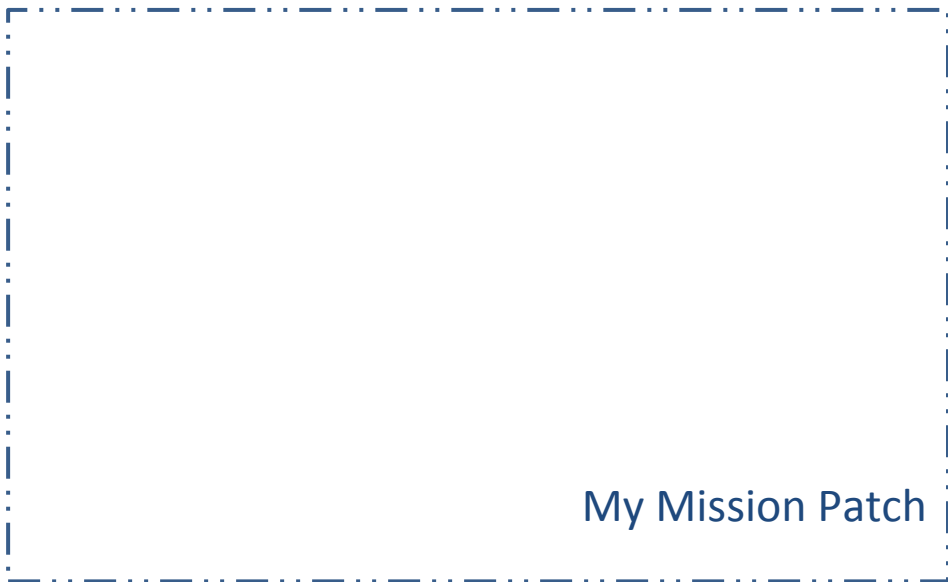
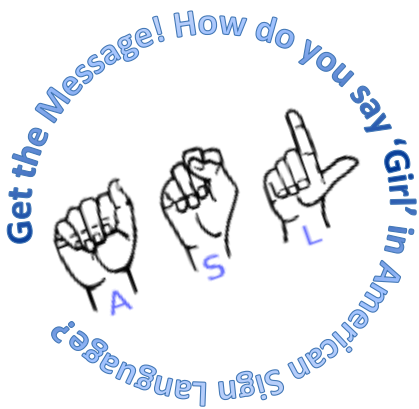


Photo Op! Take a picture of YOU as an astronaut!

#BeAnAstronaut #NASA #GSNI #DiscoveryCenterMuseum #WorldofGirls #CookiesinSpace



FOUR-WAY BENEFIT was chalked up by these Girl Scouts of Guilford Center school's troop 337, shown answering call at 5:30 p.m. last night. Besides having fun on bus for two weeks, they earned badges for sailing, learned first aid on the bus, and designed and made their own sailing caps for badges in sailing. From left are (front row) Pity Pops, Kathy Labor, Ann Lundgren, Wendy Van Cura, Joan Erickson, Joy Swagg, Ed Swigg, Denise Briggs, Janice Voss (second row) Linda Blaine, Joelle Phillips, Evis Erickson, Carol Schopfer, Mary Zicki, Debbie Gotscho, Kristine Nowler, Kathy Swanson, Victoria Lentz, Lauris Lindero (back row) Kathy Deber, Gill Johnson, Sarah Bosh, Debbie Britt, Gail Gomasco, Vicky Voss, Julie Linden, Julie Countryman.



My Mission Patch



Page 40, The Brownie Friends Passport:

Campbell, Jamila, and Alejandra visit new places and meet new friends with the Brownie Elf. Use the Geochron Clock across from the Space Shuttle to determine the time in the three countries they visit.



Nunavut

Capital City: *Iqaluit*



Lakti
Ungava Inuit

Jordan

Capital City: *Amman*



Shali

Thailand

Capital City: *Bangkok*



Chosita
(Happiness)



Page 31, Tell a Story!

Head to the news desk in *Get the Message*, or go to the *TV Studio* on the second floor to tell YOUR story!

Where would you like to see the Brownie Friends travel next?

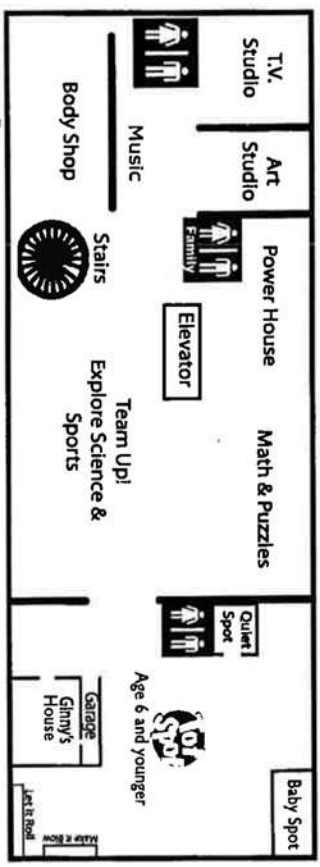


For more fun, check out www.DiscoveryCenterMuseum.org for Girl Scout Badge Workshops, Camp-ins, and Museum Scout Days!



discovery center MUSEUM

At Riverfront Museum Park
711 North Main Street
Rockford, IL 61103
www.discoverycentermuseum.org
815-963-6769



Main Level

