



Winter/Spring 2011

News about events and exhibits at Discovery Center Museum in Rockford, IL

## INSIDE:

**2** Information  
The Sky is NOT the Limit  
Countdown to Fun!

**3** Special Events  
**4** Tot Spot Classes  
**5** Home School Classes  
After School Classes  
Family Classes

**6** Gift Shop Highlights  
Tot Spot Bank Gets New Look  
NASA Workshop  
Wine Tasting

**7** Grants & Gifts News  
Two Mornings of Fun for Everyone

**8** Grossology  
Harry Potter

## Bubble Festival 2011

Discovery Center will once again be filled with bubbles and sudsy creations as we celebrate National Bubble Week with international bubble artist Geoffrey Akins. Akins will perform six shows on **Saturday, March 19**. Advance tickets go on sale **January 10**. Last year's shows sold out, so get your tickets early!

Akins, also an author and inspirational speaker, uses his bubble shows to demonstrate the importance of determination and the idea that anything is possible.

The Bubble Man does amazing things with ordinary soap bubbles, creating dancing bubbles, bubble caterpillars, ice cream cones, a moving bubble merry-go-round and even the impossible square bubble!

After the show, test your own soapy skills with bubble art and activities for the whole family in the Bubble-Palooza Playground.



### Show Times:

9:00 a.m. | 10:30 a.m.  
12:00 p.m. | 1:30 p.m.  
2:30 p.m. | 3:30 p.m.

### Admission:

**In advance:**  
\$4 public/\$3 members

**At the door:**  
\$5 public/\$4 members  
Museum admission is extra

## INFORMATION:

### Hours

**Monday – Saturday:** 10 a.m. – 5 p.m.

**Sunday:** Noon – 5 p.m.

### Admission

**Adult/Child:** \$7

**Children under 2 and members:** FREE!

### Membership

**Family SuperPass Membership:** \$110/year

**Basic Family Membership:** \$70/year

**Grandpass Membership:** \$70/year

*(grandparents & all grandkids under 18)*

**Individual Membership:** \$50/year

### Group Rates

Discounted group rates are available for tours, classes, museum rentals, and birthday parties. Reservations required.

### Contact Us

**Phone:** (815) 963-6769

**Website:** [www.discoverycentermuseum.org](http://www.discoverycentermuseum.org)

### Staff

Sarah Wolf . . . . . *Executive Director*

Jacquelynn Accetta . . . . . *Education Specialist*

Christopher Bernd . . . . . *Outreach Coordinator*

Nancy Blank . . . . . *Operations Manager*

Debbie Beutel . . . . . *Early Childhood Educator*

Martha Krebeck . . . . . *Accountant*

Joyce Mazzola . . . . . *Gift Shop Manager*

Lynn Momberger . . . . . *Development Director*

Jim O'Brien . . . . . *Exhibits Technician*

Lori Radean . . . . . *Volunteer & Special Projects Coordinator*

Carm Rongere . . . . . *Office Manager*

Bruce Quast . . . . . *Exhibits Director*

Mike Rathbun . . . . . *Associate Director*

Corinne Sosso . . . . . *Director of Education & Programs*

Gloria Svanda . . . . . *Coordinator of Early Childhood Education*

Ann Marie Walker . . . . . *Marketing Manager*

### Our Mission

Create opportunities for joyful learning & discovery through hands-on experiences in science & art.

## The Sky is NOT the Limit

Discovery Center is proud to announce galactic upgrades in the planetarium. December will see the installation of a new digital projection system that will make our planetarium offerings truly astronomical. We are purchasing a digital projection system that will render the universe in full color on the planetarium dome. Stars will be brighter, and pictures will be clearer, with animation and 3-D rendering added to the mix. In addition to an enhanced night sky, visitors will enjoy multi-media presentations on a variety of stellar topics. Your Preschooler or Kindergartener will love "Fantastic Space", while Earth's moon and other solar system satellites are the stars of "Moon Dreams." Look for these and other out-of-this world offerings during your next visit. Planetarium shows are featured daily at 1:00 and 3:00 p.m. during the holidays.

## Countdown to fun!

Celebrate the New Year a little early at Discovery Center. On Friday, December 31 from 12:30 to 4:30 p.m. crafts, games, music and art will come together as we count down to midnight—somewhere in the world! Ring in the New Year with music from Kantorei, the singing boys of Rockford. Get in the spirit with party hats, confetti, favors and more! Included with museum admission.



## Discovery Center Museum has birthday parties down to a science!

Our fun-filled, hassle-free parties begin at just \$100 for Non-members and \$90 for Members and include invitations, cupcakes, punch, exploration time in the Museum and more! Special activity and pizza parties are available for additional fees.

Call us at 815.963.6769 to reserve your child's party or for additional information.

# Special Events

All events included with general admission to Discovery Center unless otherwise noted. General admission: \$7 adults; \$7 children ages 2–17; Free to children under age 2 and Museum members.

## The Grossest Day of the Year

Sunday, January 2, 2011; 12:00–5:00 p.m.

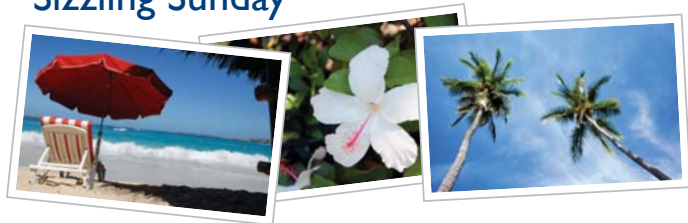
Join in the festivities as we celebrate the last day of "Grossology." Use a timer to rate your burps, manufacture monstrous scabs, and check out guts from the inside out. All activities included with "Grossology" admission, \$12 public / \$3 members.

## Get Moving: Playing with Food

Saturday, January 22; 12:00 p.m.–3:00 p.m.

Join us for this *Pioneering Healthy Communities* event. Get in on the adventure of "Discovering the Pyramid" as we gather the grains, vary our veggies, flip through the fruits, discover the dairy, overhaul our oils, and manage our meats.

## Sizzling Sunday



Sunday, January 30; 1:00–4:00 p.m.

Come in out of the cold for warm family fun in the Caribbean. Frolic in our giant "lava" pit and witness a volcanic eruption. Hop around the islands as you sample the local cuisine and create tropical arts and crafts! Sponsored by Williams-Manny.



## Chocolate Sundae Sunday

Sunday, February 13; 2:00–4:00 p.m.

Join us for this delicious annual event! Enjoy a sundae you design yourself, spend time creating heart-y crafts, and delight in the toe-tapping tunes of the Dixieland Docs. Sponsored by Dean Foods.

Cost is \$1.50 members / \$2.50 public. Museum admission is extra.

## Discover Engineering

Saturday, February 19; 11:00 a.m.–3:30 p.m.

Calling all kids who like to tinker! Join Discovery Center Museum as we kick-off National Engineers' Week! Meet real engineers for some hands-on challenges and lots of career information. Special workshops for scouts are also available! Sponsored by Rockford Performance Products, RjLink, and Rockford Bank & Trust.



## Dino Days

Saturday, March 5; 11:30 a.m.–3:30 p.m.  
and Sunday, March 6; 12:30–3:30 p.m.



Jumping Jurassic! Test your Mesozoic memory in our dinosaur game show and flex your Cretaceous creativity to fashion a prehistoric monster hat and puppet.

## Bubble Festival

Saturday, March 19;

Shows 9:00 a.m.; 10:30 a.m.; 12:00 p.m.; 1:30 p.m.; 2:30 p.m.; 3:30 p.m.

Discovery Center celebrates National Bubble Week with bubble celebrity Geoffrey Akins' live performances and sudsy science fun. After the show, test your own soapy skills with bubble art and activities for the whole family in the Bubble-Palooza Playground.

In advance: \$4 public; \$3 Members;

At the Door: \$5 public; \$4 Members.

Museum admission is extra.

## Spring into Science

Monday – Friday, March 28–April 1; 1:00–4:00 p.m.

Don't let your brain take a break! Enjoy daily science demonstrations, engage in experiments, and create your own beautiful springtime art.

Sponsored by Aqua-Aerobic Systems.



## Nano Day

Saturday, April 2; 11:30 a.m.–4:00 p.m.

Explore science at the nanoscale and see how small changes can make an enormous difference! Check out what's up and coming in the field of nanotechnology with special demonstrations and hands-on projects.

## Kids in the Kitchen

Saturday, April 16; 10:00 a.m.–2:00 p.m.

In conjunction with Junior League of Rockford's "8 Gifts to the Community" 2010-2011 community service initiative which celebrates the League's 80th anniversary, Junior League of Rockford, Inc. will come to Discovery Center Museum to present its Kids in the Kitchen event, focused on educating families on healthy eating and fitness habits. This FREE event is open to the entire community, and families with children 10 and under are encouraged to attend. Learn how to prepare healthy snacks for your family, enjoy some interactive fitness activities, and have lots of fun! Museum admission is not included. For more information, visit [www.jlrockford.org](http://www.jlrockford.org).

## Egg Hunt

Saturday, April 23; 10:00 a.m.–3:00 p.m.

\$10 children; \$7 adults; Member children of either museum \$2, member adults and children under 2 are free!

Discovery Center joins Burpee Museum for this entertaining egg-stravaganza. Kids 9 and under can look for eggs at 11:00 am and 1:00 pm. The rest of the time, kids of all ages can get their hands on some super springtime crafts and delve into egg-cellent fun.

## Astronomy Day

Saturday, May 7; 1:00–4:00pm

Discovery Center celebrates National Astronomy Day with free planetarium shows, star maps, and glittery star crafts. Check out the inner workings of a telescope and take a close-up look at our star the Sun with the Rockford Amateur Astronomy Club. Sponsored by Astro-Physics, Inc.



## The Buzz About Bees

Sunday, May 22; 1:00–4:00 p.m.

Meet Dr. May Berenbaum, Head of the Department of Entomology at the University of Illinois, and local bee expert Phillip Raines of Raines Honey Farm! Taste delicious honey, learn to dance like a bee, build a buzzing science toy, and more! Plus, stick around for a screening of the movie *Vanishing of the Bees*. Bring the whole family and find out what the buzz is all about!



# Tot Spot Classes

**Cost:**  
**\$12 public**  
**\$10 members**

Our 2-year-old classes offer special interactive activities, so children **MUST** be accompanied by an adult with **NO SIBLINGS**, please. To register, call Debbie at 815-972-2828. Class Registrations begin on December 16 for members/December 20 for non-members.

## Polar Bear Picnic!

Leap the icebergs and land in an exciting polar bear expedition. Celebrate with a frozen snack and chill out while constructing a polar bear of your own.

### Sessions for 3 – 6-year-olds:

- Session 1 Tues, Jan. 25; 11:00 a.m. – Noon
- Session 2 Wed, Jan. 26; 9:30 – 10:30 a.m.
- Session 3 Wed, Jan. 26; 11:00 a.m. – Noon
- Session 4 Wed, Jan. 26; 1:00 – 2:00 p.m.
- Session 5 Thurs, Jan. 27; 9:30 – 10:30 a.m.
- Session 6 Sat, Jan. 29; 9:30 – 10:30 a.m.
- Session 7 Sat, Jan. 29; 11:00 a.m. - Noon

### Sessions for 2-year-olds:

- (With an adult, NO siblings, please.)
- Session 8 Tues, Jan. 25; 9:30 – 10:30 a.m.
- Session 9 Thurs, Jan. 27; 11:00 a.m. - Noon
- Session 10 Fri, Jan. 28; 9:30 - 10:30 a.m.

## Seeing Red!

Dress in RED for this special class. Mix red paint with other colors to see what happens. Get caught red-handed making a work of "heart" and share a Valentine treat.



### Sessions for 3 – 6-year-olds:

- Session 1 Tues, Feb. 8; 11:00 a.m. – Noon
- Session 2 Wed, Feb. 9; 9:30 – 10:30 a.m.
- Session 3 Wed, Feb. 9; 11:00 a.m. – Noon
- Session 4 Wed, Feb. 9; 1:00 – 2:00 p.m.
- Session 5 Thurs, Feb. 10; 9:30 – 10:30 a.m.
- Session 6 Sat, Feb. 12; 9:30 – 10:30 a.m.
- Session 7 Sat, Feb. 12; 11:00 a.m. - Noon

### Sessions for 2-year-olds:

- (With an adult, NO siblings, please.)
- Session 8 Tues, Feb. 8; 9:30 – 10:30 a.m.
- Session 9 Thurs, Feb. 10; 11:00 a.m. - Noon
- Session 10 Fri, Feb. 11; 9:30 - 10:30 a.m.

## Sleepy Time Pajama Party

Wear your PJ's and bring your favorite stuffed animal or bedtime buddy to this special time of fun, music, art and stories. Discover why we yawn and why you need sleep.

### Sessions for 3 – 6-year-olds:

- Session 1 Tues, Feb. 22; 11:00 a.m. – Noon
- Session 2 Wed, Feb. 23; 9:30 – 10:30 a.m.
- Session 3 Wed, Feb. 23; 11:00 a.m. – Noon
- Session 4 Wed, Feb. 23; 1:00 – 2:00 p.m.
- Session 5 Thurs, Feb. 24; 9:30 – 10:30 a.m.
- Session 6 Sat, Feb. 26; 9:30 – 10:30 a.m.
- Session 7 Sat, Feb. 26; 11:00 a.m. - Noon

### Sessions for 2-year-olds:

- (With an adult, NO siblings, please.)
- Session 8 Tues, Feb. 22; 9:30 – 10:30 a.m.
- Session 9 Thurs, Feb. 24; 11:00 a.m. - Noon
- Session 10 Fri, Feb. 25; 9:30 - 10:30 a.m.

## Little Firefighters

Sound the siren and meet Dot, the fire-house Dalmatian, as we learn about fire safety. Pretend to climb the ladder to rescue Dot, create a fire truck project and eat a tasty snack.

### Sessions for 3 – 6-year-olds:

- Session 1 Tues, Mar. 8; 11:00 a.m. – Noon
- Session 2 Wed, Mar. 9; 9:30 – 10:30 a.m.
- Session 3 Wed, Mar. 9; 11:00 a.m. – Noon
- Session 4 Wed, Mar. 9; 1:00 – 2:00 p.m.
- Session 5 Thurs, Mar. 10; 9:30 – 10:30 a.m.
- Session 6 Sat, Mar. 12; 9:30 – 10:30 a.m.
- Session 7 Sat, Mar. 12; 11:00 a.m. - Noon

### Sessions for 2-year-olds:

- (With an adult, NO siblings, please.)
- Session 8 Tues, Mar. 8; 9:30 – 10:30 a.m.
- Session 9 Thurs, Mar. 10; 11:00 a.m. - Noon
- Session 10 Fri, Mar. 11; 9:30 - 10:30 a.m.

## Here a Chick, There a Chick!



"Peck" up fascinating facts on this feathery farm friend. See how chicks grow inside eggs, and then mix up chicken feed before taking home an art project to crow about!

### Sessions for 3 – 6-year-olds:

- Session 1 Tues, Mar. 22; 11:00 a.m. – Noon
- Session 2 Wed, Mar. 23; 9:30 – 10:30 a.m.
- Session 3 Wed, Mar. 23; 11:00 a.m. – Noon
- Session 4 Wed, Mar. 23; 1:00 – 2:00 p.m.
- Session 5 Thurs, Mar. 24; 9:30 – 10:30 a.m.
- Session 6 Sat, Mar. 26; 9:30 – 10:30 a.m.
- Session 7 Sat, Mar. 26; 11:00 a.m. - Noon

### Sessions for 2-year-olds:

- (With an adult, NO siblings, please.)
- Session 8 Tues, Mar. 22; 9:30 – 10:30 a.m.
- Session 9 Thurs, Mar. 24; 11:00 a.m. - Noon
- Session 10 Fri, Mar. 25; 9:30 - 10:30 a.m.

## It's Raining, It's Pouring

The forecast calls for showers of fun in this class. Young weather watchers will learn what makes a rainy day. Then clouds will clear in time for rainbow art and "mudlicious" mud puddles.

### Sessions for 3 – 6-year-olds:

- Session 1 Tues, Apr. 12; 11:00 a.m. – Noon
- Session 2 Wed, Apr. 13; 9:30 – 10:30 a.m.
- Session 3 Wed, Apr. 13; 11:00 a.m. – Noon
- Session 4 Wed, Apr. 13; 1:00 – 2:00 p.m.
- Session 5 Thurs, Apr. 14; 9:30 – 10:30 a.m.
- Session 6 Sat, Apr. 16; 9:30 – 10:30 a.m.
- Session 7 Sat, Apr. 16; 11:00 a.m. - Noon

### Sessions for 2-year-olds:

- (With an adult, NO siblings, please.)
- Session 8 Tues, Apr. 12; 9:30 – 10:30 a.m.
- Session 9 Thurs, Apr. 14; 11:00 a.m. - Noon
- Session 10 Fri, Apr. 15; 9:30 - 10:30 a.m.

## Fit Kids

Go on a nutrition safari to learn about eating healthy. Explore fun ways to build strong bones and muscles through nutrition and exercise - discoveries that will last a lifetime.

### Sessions for 3 – 6-year-olds:

- Session 1 Tues, May 3; 11:00 a.m. – Noon
- Session 2 Wed, May 4; 9:30 – 10:30 a.m.
- Session 3 Wed, May 4; 11:00 a.m. – Noon
- Session 4 Wed, May 4; 1:00 – 2:00 p.m.
- Session 5 Thurs, May 5; 9:30 – 10:30 a.m.
- Session 6 Sat, May 7; 9:30 – 10:30 a.m.
- Session 7 Sat, May 7; 11:00 a.m. - Noon

### Sessions for 2-year-olds:

- (With an adult, NO siblings, please.)
- Session 8 Tues, May 3; 9:30 – 10:30 a.m.
- Session 9 Thurs, May 5; 11:00 a.m. - Noon
- Session 10 Fri, May 6; 9:30 - 10:30 a.m.

To register for Tot Spot, call the number listed below or download the registration form

Tot Spot: Debbie at 815-972-2828  
Home School, After School, & Family Class  
Jaqu at 815-972-2844

Class sizes are limited. Class registration starts December 20 for the general public. Refunds and cancellations must be made at least 10 days prior to class date. Payment must accompany registration.

## Home School Classes

Let these hands-on classes enhance your science curriculum studies. Preregistration required. To register, call 815-972-2844 or drop by the Discovery Center Museum office during normal business hours. Payment must accompany registration. Class registration starts December 16 for members and December 20 for the general public. Class fees: \$11 Members / \$13 Public; ages 7 and up. Registration closes 5:00 p.m. Friday of the week before class.

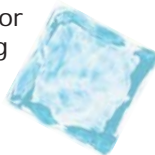
### Frosty Science

Wednesday, February 23; 10:30 a.m. – 12:00 p.m.



Put on your mittens and get ready for the science of cold! Test for freezing points, learn the best way to melt ice, and experiment with super chilly

dry ice.



### Dinner at Newton's

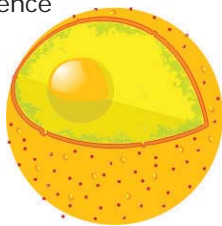
Wednesday, March 23; 10:30 a.m. – 12:00 p.m.

Get an in-depth look at Newton's Laws of Motion and other physics phenomena using objects found at the dinner table. Inspect inertia, mess with mass, and reconsider reactions as you balance forks, test a tablecloth, and more!

### Cell-a-Vision

Wednesday, April 13; 10:30 a.m. – 12:00 p.m.

Join us as we transform our domed theater into a model of a living cell. Discover the cellular difference between plants and animals, move materials through a membrane, and examine real cells through a microscope.



### What's the Matter?

Wednesday, May 4; 10:30 a.m. – 12:00 p.m.

What is the difference between solids, liquids, and gases? Compare and contrast various materials in different states (and we don't mean Illinois and Wisconsin!). Then get your hands into some unusual matter as we classify strange substances.

## After School Classes

### Scratch It

Wednesdays, 4:15 – 6:15 p.m.; January 19, 26; February 2, 9, 16, 23; March 2, 9

Join science expert Don Swanson to develop and polish the skills needed to design your own video game. Students will receive a Computer Programmer's Guide and a free copy of the Scratch program for more fun at home. Limited enrollment. Ages 11-adult. Eight sessions. Members \$115 / Public \$130

### Computer Tech

Saturday, February 26, 9:00 a.m. – 3:00 p.m.

Have you ever wondered how a computer works? Here's your chance to find out and go home with a computer you put together. Entre Computer Solutions is providing the know-how and materials for this exciting opportunity. Each student will take home a real computer with Windows 7 and a used monitor. Enrollment limited to 10 students in grades 5-7. Students are asked to bring their own lunch. \$160 class / Optional new 17" flat screen monitor \$90.

## Family Classes

Moms, dads and grandparents: spend some fun learning time with your youngsters! One adult required for every 3 children. Ages and fees vary by topic.

### Frosty Skies

Sunday, January 16, 4:00 – 6:00 p.m.

Bring the whole family and learn how to navigate through the starry winter skies! We'll explore constellations, planets, and the moon with hands-on activities, take-home projects, and a special presentation in the planetarium. Plus, if the clouds cooperate, we'll go outside and experience real observing with our telescopes! Bring warm clothes; hot chocolate will be provided.

Ages 6 and up

Children: \$8 Members / \$10 Public

Adults: \$4 Members / \$5 Public

### D'Egg-orating

Saturday, April 23, 1:30 – 3:00 p.m.



Find out how easy it is to create beautiful Easter Eggs! Enjoy an egg-cellent snack as you experiment with several decorating techniques including iridescence, stained glass, appliqué and more. Relax and enjoy the fun while we take care of the prep work and clean up! We supply each child with one dozen hard

boiled eggs plus dyes and decorating materials. Bring your own additional eggs if you choose.

Recommended for ages 4 and up

First child: Members \$12 / Public \$15

Each additional child: Members \$4 / Public \$5

Spot, Home  
Family Classes,  
or drop by our office  
from our website.

Classes:

starts December 16 for members and  
may be issued for classes if partici-  
e. You must register in advance.

## Discovery Center Gift Shop highlights new items and fan favorites

Our *Discoveries to Go* Gift Shop offers a variety of carefully chosen, creative, fun and educational items for sale. New items are featured regularly. Try out the Brain Noodles – kits of fluffy, bendable sticks to make creative designs. We've got many new books...check out *Potato Chip Science* that explores major branches of science, plus new art books as well as lots of new Klutz books!

The Gift Shop also has the newest Webkinz and a variety of (small and large) Case IH tractors. Look for the 8-foot Snakelogy, Bananagrams for children and adults, and cute flashlights for boys and girls. Also new and adorable is Lunch Mail...you can't be with your child all day but your message can be! These are great little notes you tuck into your child's lunch box. The hot Zanybandz are here. And be sure to check out the new Fair Trade display. Discovery Center Museum members always receive a discount, so do your holiday shopping here!

**Members get 25% off in the Gift Shop now through December 24. Non-members receive 15% off.**

## Save the date for wine tasting

The Discovery Center Auxiliary will host its annual Corks & Conversation Wine Tasting on Sunday, February 13, 2011. The event will be held at Ciao Bella Restaurant from 4:00 to 7:00 p.m. In addition to wonderful wines and delicious appetizers, there will be a raffle and balloon burst. Cost is \$25 per person. For reservations, call Lori Radean at 815-972-2839.



*Discovery Center Associate Director Mike Rathbun accepts a \$5,000 check from Macy's Store Manager Julie Schuring.*

## Tot Spot Bank gets new look



# HARRIS®

The Tot Spot at Discovery Center welcomes Harris Bank! Visitors

will be amazed at the fresh new look of the interactive Harris Bank where children ages 2-to-6 can learn about money and banking. The role play exhibit has been modernized to include an ATM - so children can be exposed to a technology that they often see their parents using.

The grand opening of the Harris Bank Tot Spot is set for Saturday, January 29, 2011 at Discovery Center. Harris' beloved mascot, Hubert the Lion, will also be on hand, as well as a life-size version of Hubert made entirely of Lego bricks that will greet children as they enter the exhibit area. Financial education materials and programs are planned for various times during the exhibit, which runs through April 18, 2011. These materials will make use of your youngster's boundless imagination to understand the limitations of the card in your wallet and give him or her a sense of dollars and cents.

While visiting our new Harris Bank, check out the new Woodman's grocery store, too!

## NASA workshop held at Discovery Center

Discovery Center hosted a NASA workshop for individuals and organizations interested in a new funding opportunity through NASA's Global Climate Change Education Project. The goals of the IGCCE are to (1) increase the level of climate literacy and engagement of the United States public; and (2) to create a diverse, highly skilled, and motivated future workforce in climate-related sciences. The IGCCE will be accepting proposals from minority institutions, community colleges, K-12 school districts with high minority populations, and non-profit organizations focused on underrepresented minorities.

# Grants & Gifts News

August 1, 2010 – November 10, 2010

We thank the following donors for their generous support of Discovery Center exhibits, events, educational programs, and operations.

## Grants, Sponsorships & Corporate Donations

- Grand Victoria Foundation - \$50,000
- Harris Bank - \$6,000
- Dr. Scholl Foundation - \$5,000
- Macy's - \$5,000
- Clarcor Foundation - \$2,500
- Rock River Valley Blood Center - \$2,500
- Aqua-Aerobic Systems, Inc. - \$1,000
- GKN Rockford Inc. - \$1,000
- Sjostrom & Sons Foundation - \$1,000
- Dean Alan Olson Foundation - \$500
- RjLink - \$500
- Rockford Bank & Trust - \$500
- Savant - \$500
- SE/Coady Architects, LLC - \$500
- Specialty Screw - \$500
- Williams-Manny Inc. - \$500
- WilliamsMcCarthy, L.L.P. - \$500
- Herbert H. Kohl Charities - \$250
- Advanced Machine and Engineering - \$200
- PR Etc. - \$150
- Richard K. Usedom, D.D.S. - \$100

If your organization would be interested in partnering with Discovery Center to sponsor an exhibit, event or program, please call Lynn Momberger at 815-972-2834.

Donations are also accepted on-line at [www.discoverycentermuseum.org](http://www.discoverycentermuseum.org); click on *support the museum*, then *donate*.

## We've got mail



Discovery Center staff love getting mail from our visitors. Here's a note from Larry and Matthew...two young fans:

*Dear Discovery Center Staff, Thank you for showing us all the Grossology stuff. It was really gross but cool. We really liked it. We really liked it when we made scabs.*

We're glad you enjoyed Grossology Larry and Matthew. Come back and see us again!

## Two mornings of fun for everyone!

We invite children with disabilities and their families to experience Discovery Center's multi-sensory exhibits and activities. Families can enjoy having the museum to themselves for two Saturday mornings. On Saturday, February 26 and Saturday, April 2 from 9:00 a.m. to 10:00 a.m., children and families can play at Discovery Center before the museum opens to the general public. Staff from Rockford Park District's Therapeutic Recreation Department will be on hand. Call 815-963-6769 to make a reservation.

Sponsored by CWB Foundation.

facebook.

Discovery Center is now on Facebook

Check us out and become a fan!

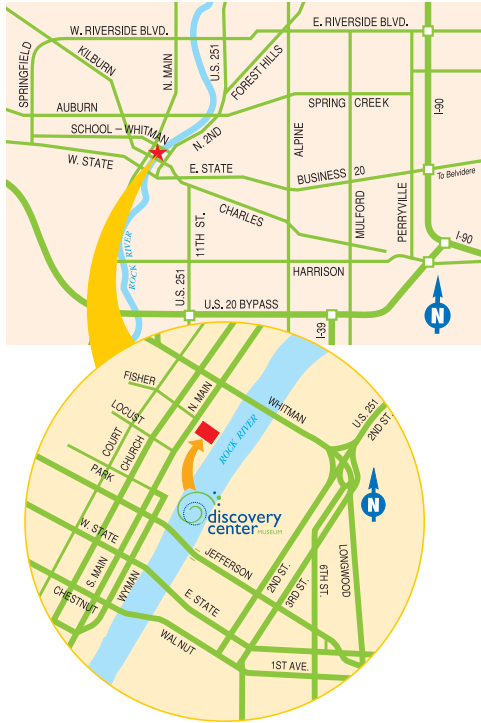


GKN Sr. Principal Engineer Bruce Skaggs (left) and General Manager Bill Heffernan (right) present a \$1,000 check to Discovery Center Development Director Lynn Momberger and Executive Director Sarah Wolf.

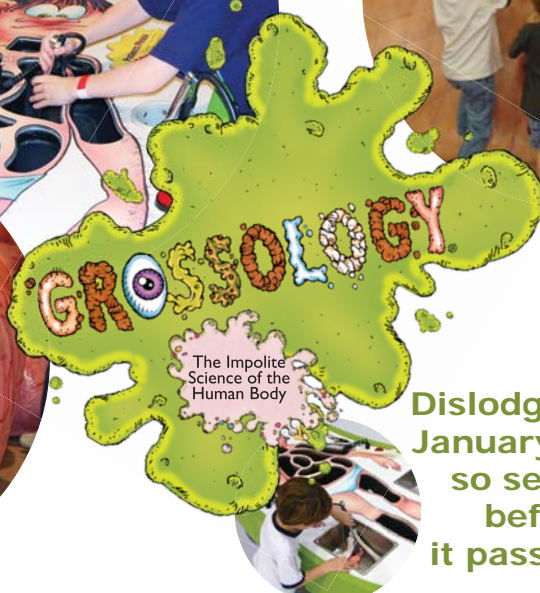
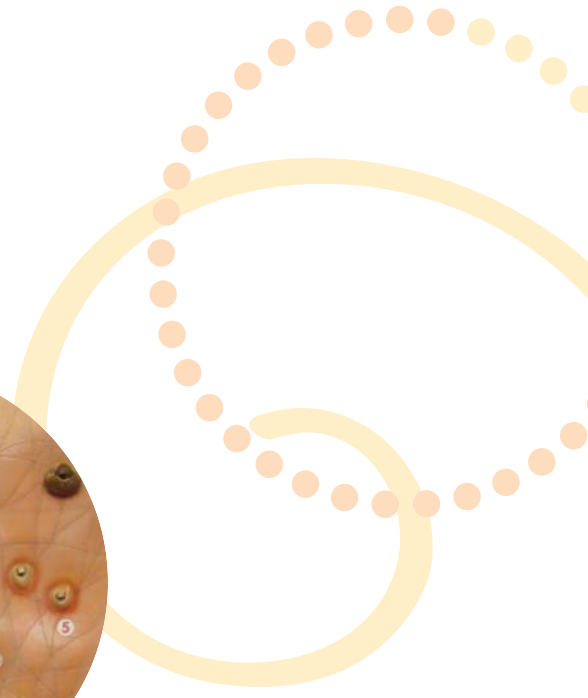


At Riverfront Museum Park  
 711 North Main Street  
 Rockford, IL 61103  
 815.963.6769  
 www.discoverycentermuseum.org

Non-Profit Org.  
 U.S. Postage  
 PAID  
 Rockford, IL  
 Permit No. 1011



Return Service Requested



**Dislodging  
 January 2,  
 so see it  
 before  
 it passes!**



*These Harry Potter fans stop to pose for a photo at Hogwart's Happening fundraiser hosted by the Discovery Center Auxiliary.*